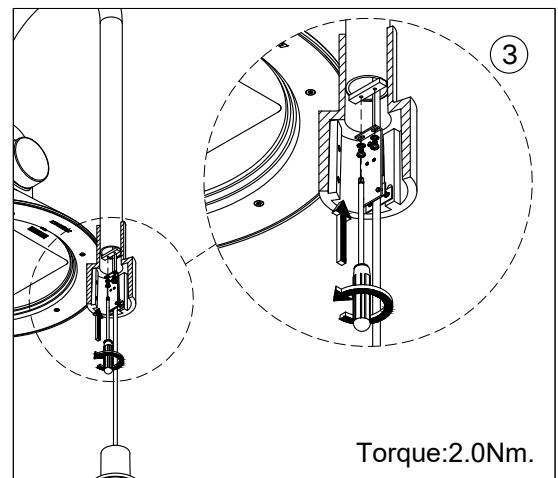
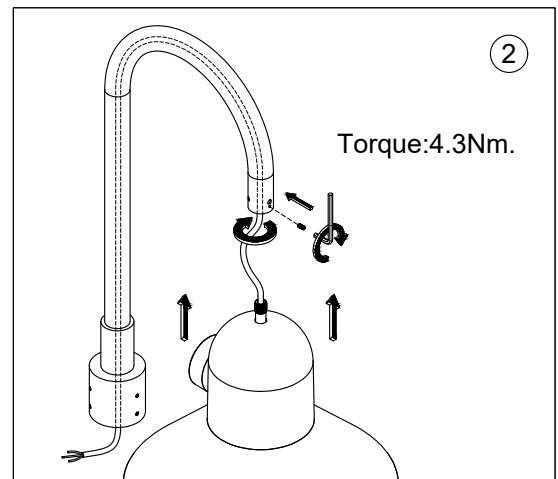
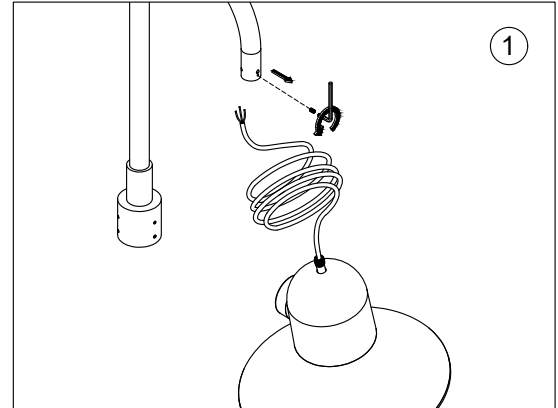
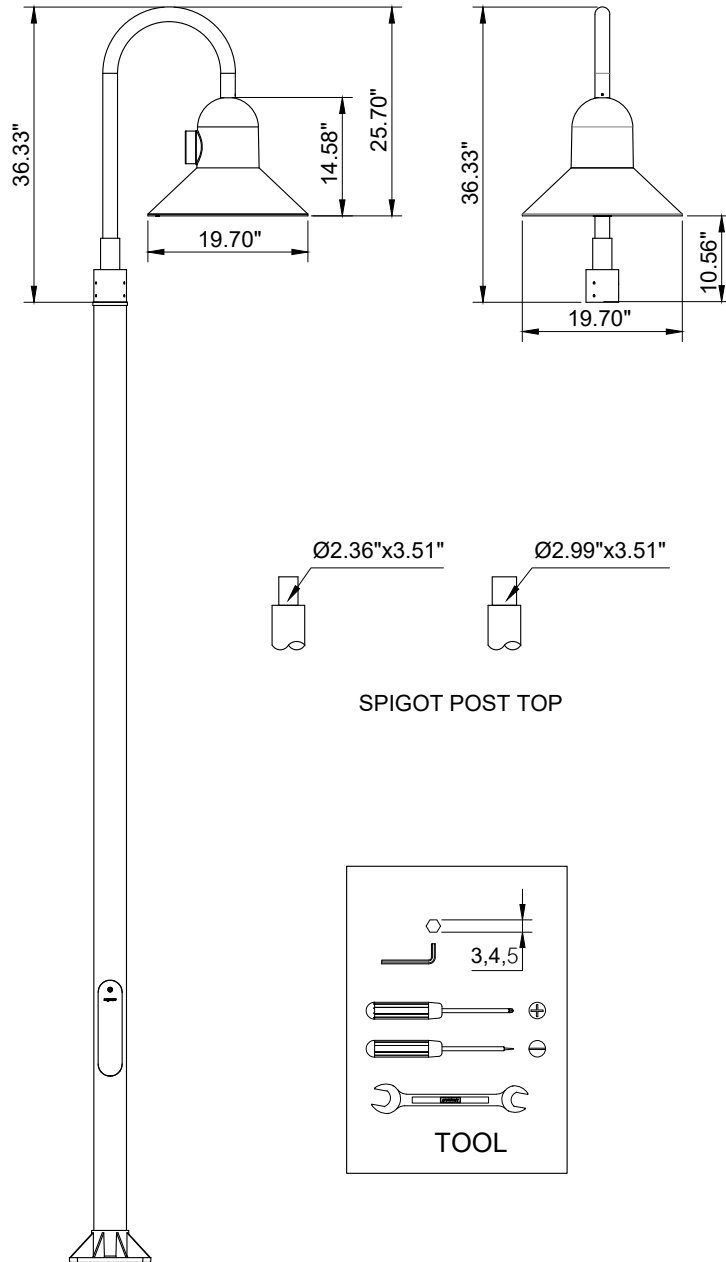


For Installation of Hamilton Sheppards crook large post top LED.
Model. UHAM-20021, UHAM-20022.

Product drawing (dimensions)



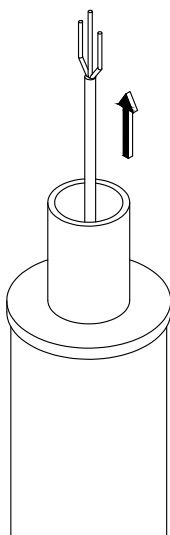
- LIGMAN standard products are supplied with the control gear 24Vdc.
The control gear for other voltages and frequencies is available upon request, please consult us for more details.
- LIGMAN luminaires are designed to conform IEC 60598 2-18 standard.
Technical amendments and modifications techniques reserved.

Ligman Lighting USA

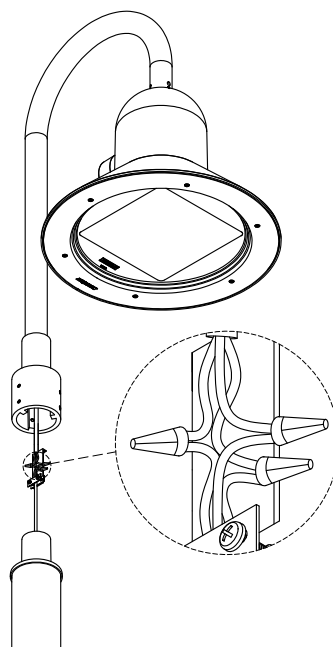
7144 NE Progress Court, Hillsboro
Oregon, 97124, USA
Tel : 503 645 0500 | Fax : 503 645 8100

MAIN CABLE
POWER SUPPLY

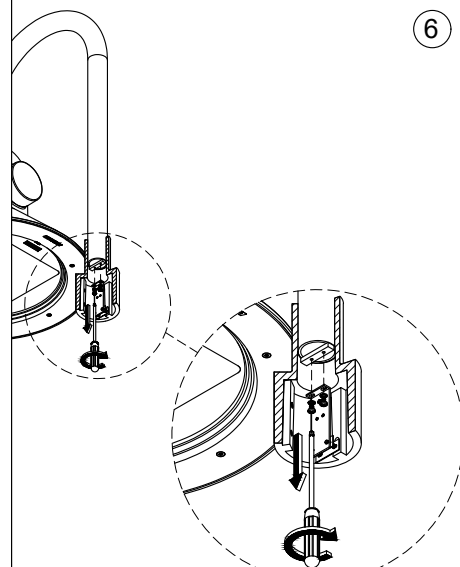
④



⑤

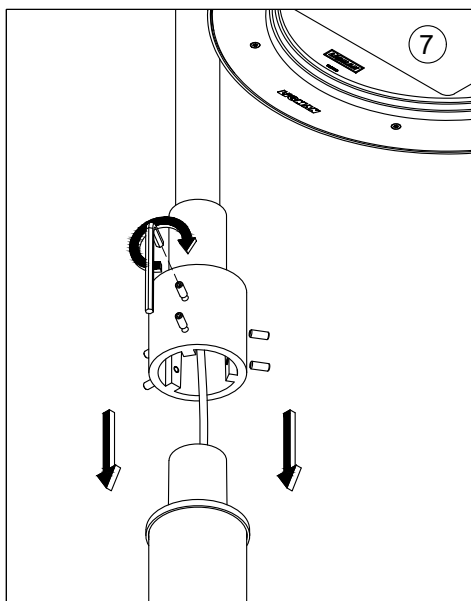


⑥

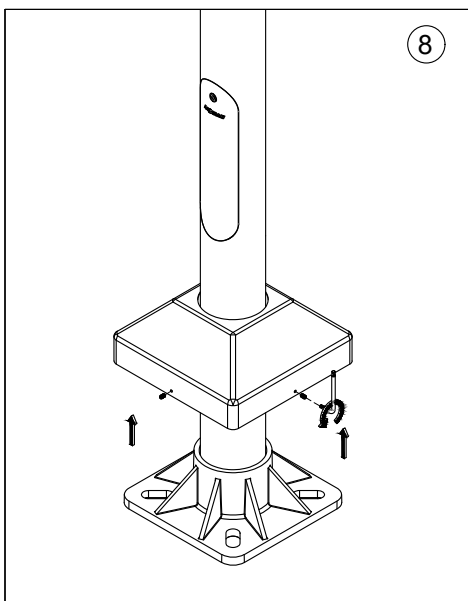


Torque: 2.0Nm.

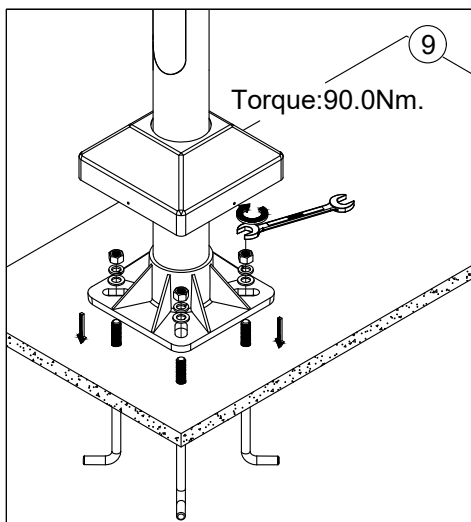
⑦



⑧



⑪



Torque: 4.3Nm.

⑩

